

# Festoon Systems for I-Beams

## 314 320 325 330 Series



**CONDUCTIX**  
wampfler

© DELACHAUX GROUP



# Contents

---

## Cable Trolleys for Flat Cables Program 0314

---

Festoon System for Flat Cables . . . . .	2
4 Wheel Plastic Trolley . . . . .	2
3 Wheel Plastic Trolley . . . . .	3
2 Wheel Plastic Trolley . . . . .	3
End Clamp . . . . .	3

---

## Cable Trolleys for Round Cables Program 0314

---

Festoon System for Round Cables . . . . .	4
4 Wheel Plastic Trolley with Ball Joint Attachment . . . . .	4
3 Wheel Plastic Trolley with Ball Joint Attachment . . . . .	5
2 Wheel Plastic Trolley with Ball Joint Attachment . . . . .	5
Cable Clip . . . . .	6
End Clamp . . . . .	6
2 Wheel Plastic Trolley with Hook Attachment . . . . .	7
Cable Collar . . . . .	7

---

## Cable Trolleys for Round Cables Program 0320, 0325 and 0330

---

Festoon System . . . . .	8
Design Features . . . . .	8
Ordering Example Program 0320 . . . . .	8

---

## Cable Trolleys Program 0320

---

Steel Trolleys for Flat Cable . . . . .	9
Steel Trolleys for Round Cable . . . . .	10

---

## Cable Trolleys Program 0325

---

Steel Trolleys for Flat Cable . . . . .	11
Steel Trolleys for Round Cable . . . . .	12

---

## Cable Trolleys Program 0330

---

Steel Trolleys for Flat Cable . . . . .	13
Steel Trolley for Round Cable . . . . .	14

---

## Accessories for Program 0320, 0325 and 0330

---

Towing Ropes . . . . .	15
Damping Devices . . . . .	15
Round Cable Clamps . . . . .	16
Spacers . . . . .	16
Flat Cable Clamps . . . . .	17

---

## Wear Parts for Program 0320, 325 and 0330

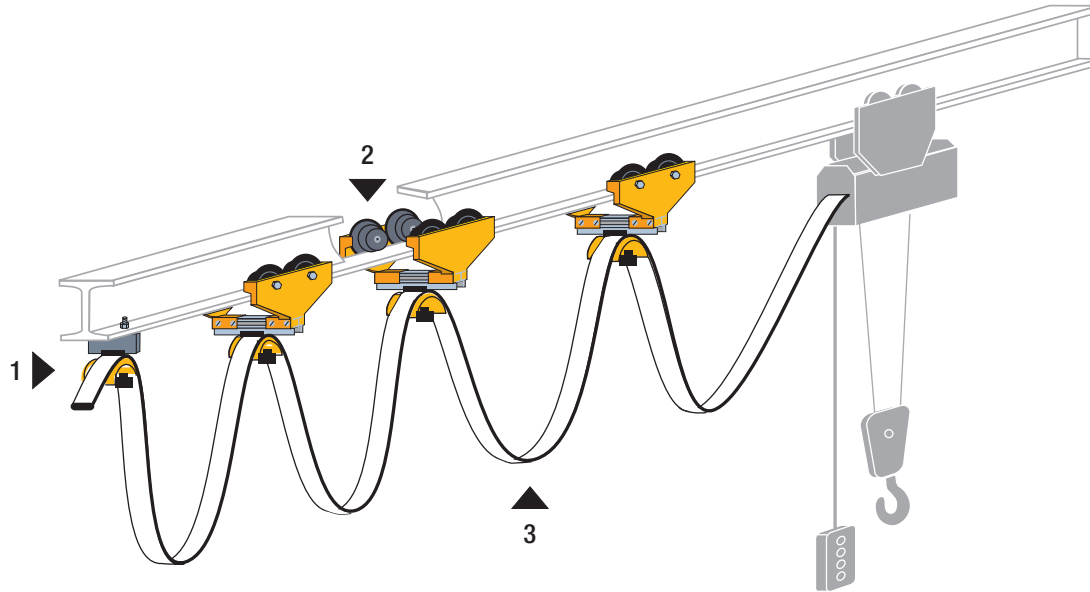
---

Replacement Rollers for Program 0320 . . . . .	18
Replacement Rollers for Program 0325 . . . . .	18
Replacement Rollers for Program 0330 . . . . .	18
Replacement Anti-Lift Roller for Program 0320, 0325 and 0330 . . . . .	19
Shock Cords for Program 0325 and 0330 . . . . .	19

---

# Cable Trolleys for Flat Cables Program 0314

Festoon System for Flat Cables

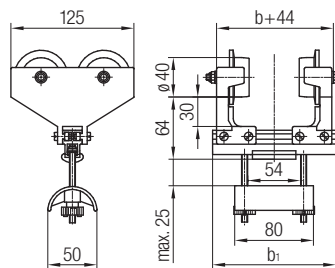


- 1. End Clamp
- 2. Cable Trolleys
- 3. Flat Cable

#### Material Cable Trolleys

Side Shield:	Plastic
Roller:	Nylon, Friction Bearing
Shaft:	Stainless Steel
Support Rail:	Aluminum
Saddle:	Plastic
Clamping Piece:	Rubber
Fasteners:	Galvanized Steel
Split Nut:	Plastic

#### 4 Wheel Plastic Trolley



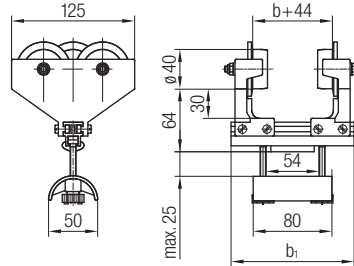
#### Application

The trolleys 022134 are designed for use with flat cables. They have a maximum cable package window opening of 54 mm wide by 25 mm high.

Standard Order No.	Increased Corrosion Resistance Order No.	$b_1$ [mm]	Max. Flange Width $b$ [mm]	Max. Travel Speed	Max. Load Capacity
022134-125	---	125	81	50 m/min (165 FPM)	20 kg (45 lbs)
022134-160	022434-160	160	116		
022134-200	022434-200	200	156		
022134-250	---	250	206		
022134-280	---	280	236		
022134-320	---	320	276		
022134-350	---	350	306		

# Cable Trolleys for Flat Cables Program 0314

## 3 Wheel Plastic Trolley

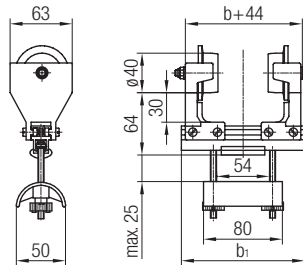


### Application

The trolleys 022133 are designed for use with flat cables. They have a maximum cable package window opening of 54 mm wide by 25 mm high.

Standard Order No.	Increased Corrosion Resistance Order No.	b <sub>1</sub> [mm]	Max. Flange Width b [mm]	Max. Travel Speed	Max. Load Capacity
022133-125	---	125	81	50 m/min (165 FPM)	10 kg (22 lbs)
022133-160	022433-160	160	116		
022133-200	022433-200	200	156		
022133-250	---	250	206		
022133-280	---	280	236		
022133-320	---	320	276		

## 2 Wheel Plastic Trolley

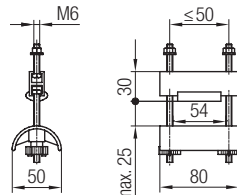


### Application

The trolleys 022132 are designed for use with flat cables. They have a maximum cable package window opening of 54 mm wide by 25 mm high.

Standard Order No.	Increased Corrosion Resistance Order No.	b <sub>1</sub> [mm]	Max. Flange Width b [mm]	Max. Travel Speed	Max. Load Capacity
022132-125	---	125	81	50 m/min (165 FPM)	10 kg (22 lbs)
022132-160	022432-160	160	116		
022132-200	022432-200	200	156		
022132-250	---	250	206		
022132-280	---	280	236		
022132-320	---	320	276		

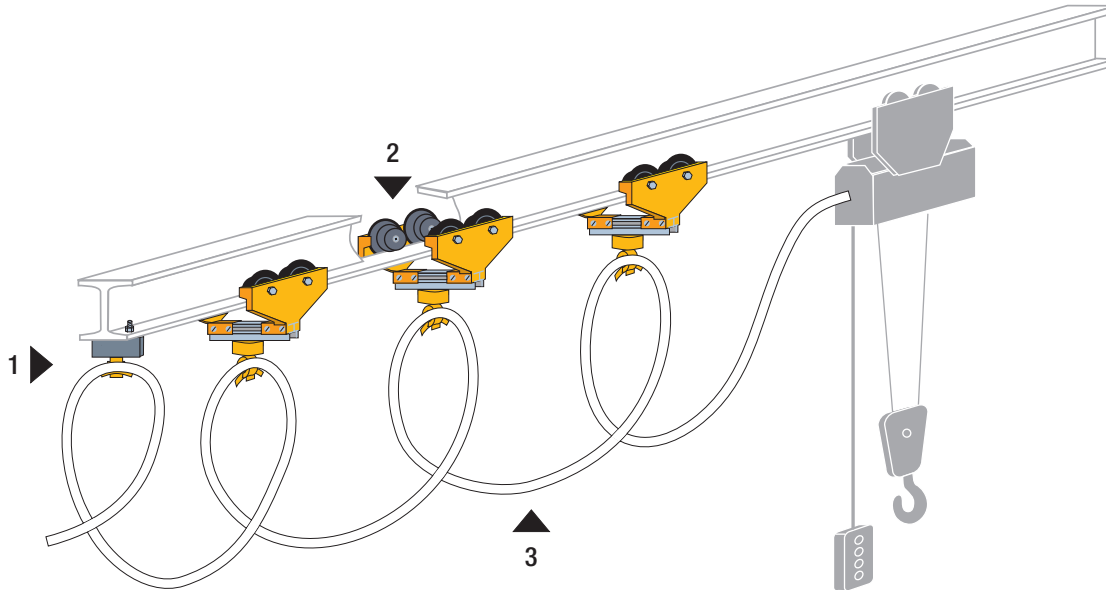
## End Clamp



Standard Order No.	Increased Corrosion Resistance Order No.
020221-080	020421

# Cable Trolleys for Round Cables Program 0314

Festoon System for Round Cables

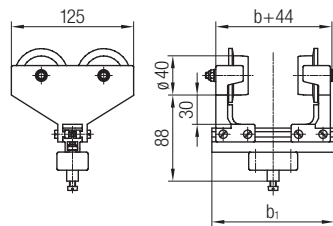


- 1. End Clamp
- 2. Cable Trolleys
- 3. Round Cable

## Material Round Cable Trolleys

Side Shield	Plastic
Roller:	Nylon, Friction Bearing
Shaft:	Stainless Steel
Support Rail:	Aluminum
Ball Joint Housing:	Plastic
Clamping Piece:	Rubber
Fasteners:	Galvanized Steel

## 4 Wheel Plastic Trolley with Ball Joint Attachment



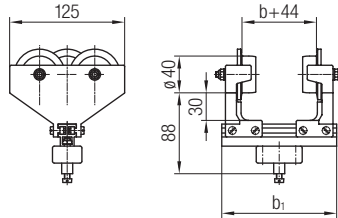
### Application

Trolley with ball joint are designed for use with round cables or hoses. Cable clip type 020131 for supporting cables or hoses must be ordered separately.

Standard Order No.	Increased Corrosion Resistance Order No.	$b_1$ [mm]	Max. Flange Width $b$ [mm]	Max. Travel Speed	Max. Load Capacity
022124-125	---	125	81	50 m/min (165 FPM)	20 kg (45 lbs)
022124-160	022424-160	160	116		
022124-200	022424-200	200	156		
022124-250	---	250	206		

# Cable Trolleys for Round Cables Program 0314

## 3 Wheel Plastic Trolley with Ball Joint Attachment

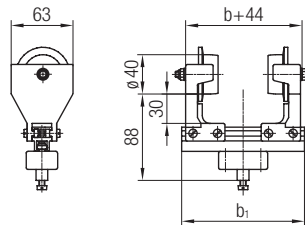


### Application

Trolley with ball joint are designed for use with round cables or hoses. Cable clip type 020131 for supporting cables or hoses must be ordered separately.

Standard Order No.	Increased Corrosion Resistance Order No.	$b_1$ [mm]	Max. Flange Width $b$ [mm]	Max. Travel Speed	Max. Load Capacity
022123-125	---	125	81	50 m/min (165 FPM)	10 kg (22 lbs)
022123-160	022423-160	160	116		
022123-200	022423-200	200	156		
022123-250	---	250	206		

## 2 Wheel Plastic Trolley with Ball Joint Attachment



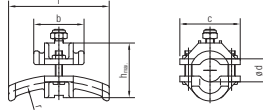
### Application

Trolley with ball joint are designed for use with round cables or hoses. Cable clip type 020131 for supporting cables or hoses must be ordered separately.

Standard Order No.	Increased Corrosion Resistance Order No.	$b_1$ [mm]	Max. Flange Width $b$ [mm]	Max. Travel Speed	Max. Load Capacity
022122-125	---	125	81	50 m/min (165 FPM)	10 kg (22 lbs)
022122-160	022422-160	160	116		
022122-200	022422-200	200	156		
022122-250	---	250	206		

# Cable Trolleys for Round Cables Program 0314

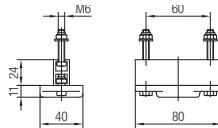
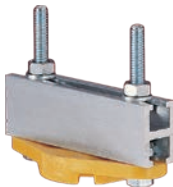
## Cable Clip



It is possible to fit multiple cable clips onto a trolley.  
When fitting different size cable clips, the largest cable clip must be fitted on top.

Standard Order No.	Increased Corrosion Resistance Order No.	$\varnothing d$ [mm]	r [mm]	l [mm]	h [mm]	b [mm]	c [mm]	Material Cable Clip
020131-16	020431-16	10 - 16	80	70	38	35	42	Plastic
020131-25	020431-25	17 - 25	125	100	47	50	50	
020131-36	020431-36	26 - 36	180	140	58	70	64	

## End Clamp

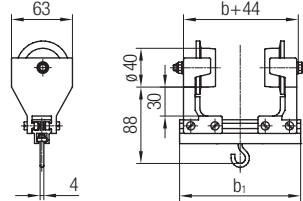


Standard Order No.	Increased Corrosion Resistance Order No.
020214-080	020414



# Cable Trolleys for Round Cables Program 0314

## 2 Wheel Plastic Trolley with Hook Attachment

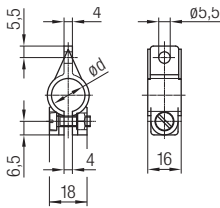


### Application

Trolleys with hook are designed for use with cable collars for round cables or hoses. Cable collar type 020111 for cables or hoses must be ordered separately.

Order No.	$b_1$ [mm]	Max. Flange Width $b$ [mm]	Max. Travel Speed	Max. Load Capacity
022112-125	125	81	50 m/min (165 FPM)	10 kg (22 lbs)
022112-160	160	116		
022112-200	200	156		

## Cable Collar



Cable collars for cables or hoses will attach to the hook on the trolley.

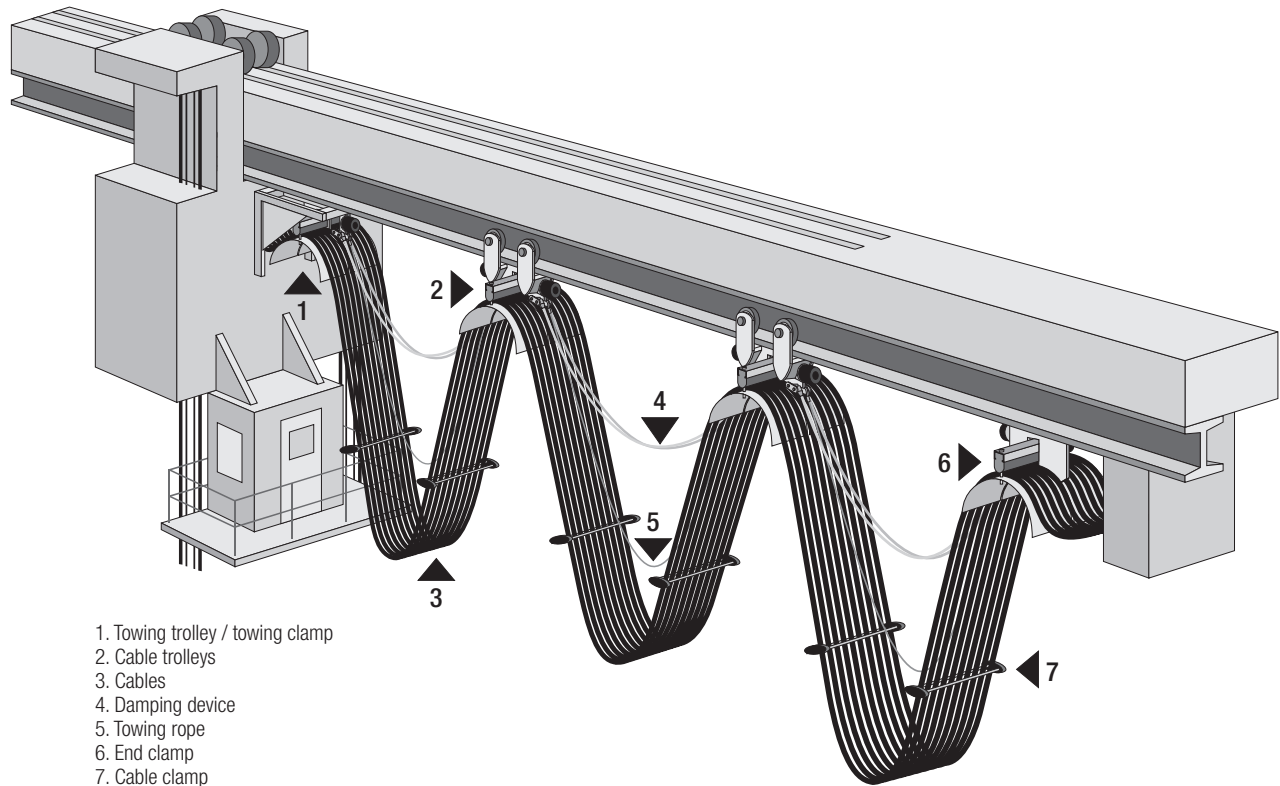
It is possible to fit multiple cable clips onto a trolley.

When stacking multiple cable collars, the largest cable collar must be fitted on top.

Order No.	$\phi d$ [mm]	$b$ [mm]	$e$ [mm]	Material	
				Cable Collar	Fasteners
020111-08	8	18	23.0	Plastic	Galvanized Steel
020111-10	10		24.5		
020111-11	11		25.5		
020111-12.5	12.5		27.5		
020111-14	14		28.5		
020111-16	16		30.5		
020111-18	18		32.5		
020111-20	20		34.5		
020111-22	22	23	36.5		
020111-25	25		39.5		
020111-28	28		42.5		
020111-32	32		46.5		
020111-36	36		50.5		

# Cable Trolleys for Round Cables Program 0320, 0325 and 0330

Festoon System



1. Towing trolley / towing clamp
2. Cable trolleys
3. Cables
4. Damping device
5. Towing rope
6. End clamp
7. Cable clamp

## Design Features

- Base trolley and saddles are of all steel construction, hot-dipped galvanized
- Fasteners: galvanized steel
- Running gear spacers are made of aluminum
- Clamping piece: rubber
- Flange guided rollers made of hardened steel
- Cylindrical main rollers made of hardened steel with plastic bandage and ball bearings
- Anti-lift rollers made of hardened steel with ball bearings

## Ordering Example Program 0320

### Example:

Trolley selection for a flat cable package size of 110 mm wide x 45 mm high set for a S6 x 12.5 I-beam with flanged rollers

### Selection:

Saddle diameter  $d_s = 125$  mm,  
according to minimum bend diameter of cable  
 $b_2 = 130$  mm;  
 $s = 60$  mm (as per table on page 9)

### Order No.:

#### Cable Trolley without anti-lift rollers

032252-250x160 / 30 - DE

Base Trolley

Running Gear Designation

Beam Suffix

#### Corresp. Tow Trolley with anti-lift rollers

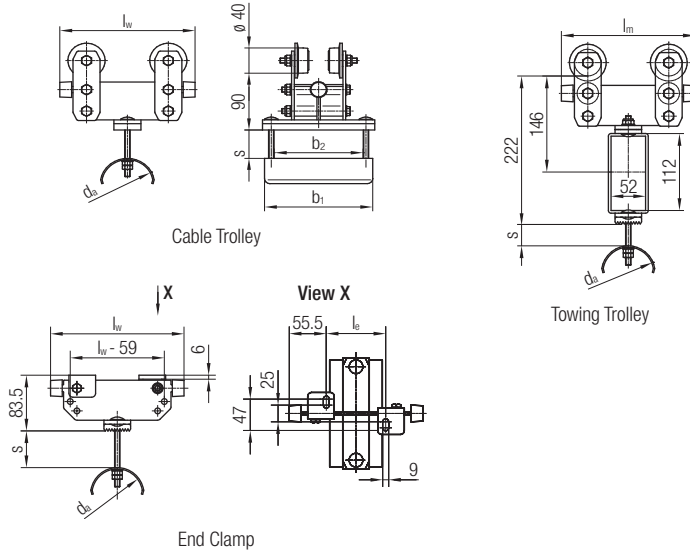
032252-250x160 / B

#### Corresponding End Clamp

032242-250x160

# Cable Trolleys Program 0320

## Steel Trolleys for Flat Cable



### Technical Details

- Max. Load Capacity 80 kg (175 lbs)<sup>1)</sup>
- Max. Travel Speed 100 m/min (330 FPM)<sup>1)</sup>
- Other trolley sizes available upon request

1) depending on roller size and roller material

Cable Trolley Order No.	End Clamp Order No.	Towing Trolley Order No.	d <sub>a</sub> [mm]	l <sub>w</sub> [mm]	b <sub>1</sub> [mm]	b <sub>2</sub> [mm]	s [mm]	l <sub>e</sub> [mm]	l <sub>m</sub> [mm]			
032250-160x100/...	032240-160x100	032260-200x100/...	80	160	100	70	35	49	200			
032250-160x160/...	032240-160x160	032260-200x160/...			160	130						
032250-200x100/...	032240-200x100	032260-200x100/...			200	100	70			55		
032250-200x160/...	032240-200x160	032260-200x160/...				160	130					
032252-200x100/...	032242-200x100	032262-200x100/...	125	200	100	70	35	89	200			
032252-200x160/...	032242-200x160	032262-200x160/...			160	130						
032252-250x100/...	032242-250x100	032262-250x100/...			250	100	70			60	139	250
032252-250x160/...	032242-250x160	032262-250x160/...				160	130					
032252-250x200/...	032242-250x200	032262-250x200/...	160	250	200	170	40	139	250			
032253-250x160/...	032243-250x160	032263-250x160/...			175	130						
032253-250x200/...	032243-250x200	032263-250x200/...			215	170	55			169	280	
032253-280x160/...	032243-280x160	032263-280x160/...			175	130						
032253-280x200/...	032243-280x200	032263-280x200/...	215	170								

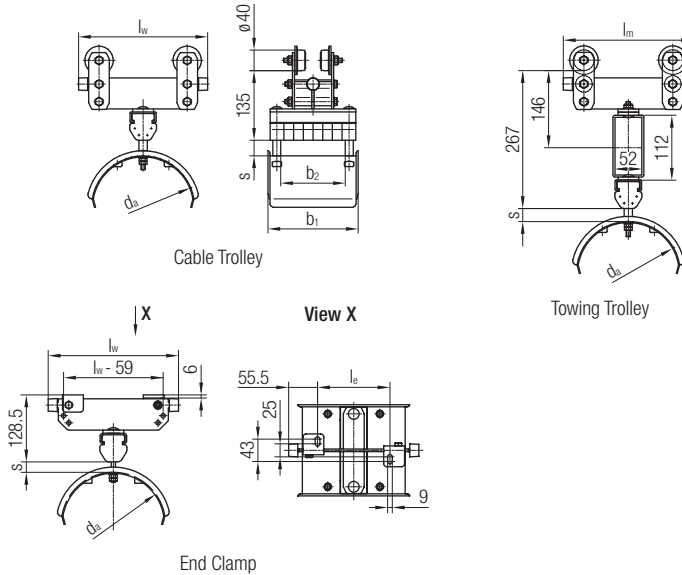
Running Gear with ø 40/55 mm Flanged Rollers for tapered flange I-Beams	
Without Anti-Lift Rollers	
Running Gear Designation with Hardened Steel Rollers .../30-...	
With Anti-Lift Rollers	
Running Gear Designation with Hardened Steel Rollers .../31-...	

Running Gear with ø 40 mm Cylindrical Main Rollers for tapered flange I-Beams only	
Without Anti-Lift Rollers	
Running Gear Designation with Hardened Steel Rollers .../10-... with Plastic Bandage .../12-...	
With Anti-Lift Rollers	
Running Gear Designation with Hardened Steel Rollers .../11-... with Plastic Bandage .../13-...	

Beam Suffix	End Clamp	Beam Size	Nominal Flange Width [Inch]   [mm]		
AA	A	S3x5.7	2.33	059	
BB		S4x7.7	2.66	068	
CC		S5x10.0	3.00	076	
DE		S6x12.5	3.33	085	
NF		S8x18.4	4.00	102	
ED		W4x13.0	3.94	100	
FD		W6x8.5	3.94	100	
GD		W6x12.0	4.00	102	
HD		B	W8x10.0	3.94	100
ID			W8x13.0	4.00	102
JD	W8x15.0		4.02	102	
KD	W10x11.5		3.95	100	
LD	W10x15.0		4.00	102	
MD	W10x17.0	4.01	102		

# Cable Trolleys Program 0320

## Steel Trolleys for Round Cable



### Technical Details

- Max. Load Capacity 80 kg (175 lbs)<sup>1)</sup>
- Max. Travel Speed 100 m/min (330 FPM)<sup>1)</sup>
- Other trolley sizes available upon request

1) depending on roller size and roller material

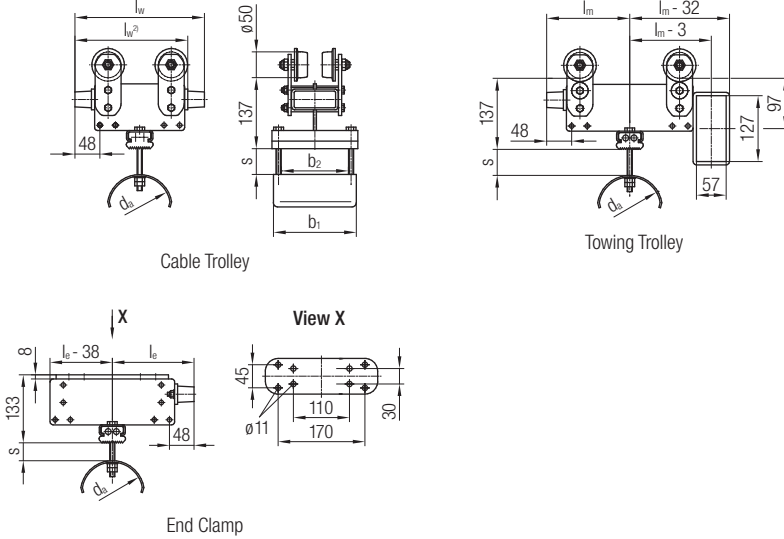
Cable Trolley Order No.	End Clamp Order No.	Towing Trolley Order No.	$d_a$ [mm]	$l_w$ [mm]	$b_1$ [mm]	$b_2$ [mm]	$s$ [mm]	$l_e$ [mm]	$l_m$ [mm]
032464-250x160/...	032494-250x160	032474-250x160/...	200	250	175	125	20	139	250
032464-250x200/...	032494-250x200	032474-250x200/...			215	165			
032465-320x160/...	032495-320x160	032475-320x160/...	250	320	175	125	25	209	320
032465-320x200/...	032495-320x200	032475-320x200/...			215	165			
032465-320x250/...	032495-320x250	032475-320x250/...			265	215			
032467-400x160/...	032497-400x160	032477-400x160/...	320	400	175	125	32	289	400
032467-400x200/...	032497-400x200	032477-400x200/...			215	165			
032467-400x250/...	032497-400x250	032477-400x250/...			265	215			

Pictures and drawings on this page show various styles of running gear. In practice, any combination of running gear is available. Trolleys from Program 0320 with running gear of Program 0325 (Roller diameter 50 mm) can be supplied, see pages 11 and 12. It is suggested that tow trolley running gear be selected with anti-lift rollers. Running gear to fit other beam styles are also available. Please consult factory.

Running Gear Designation	Running Gear with $\phi 40/55$ mm Flanged Rollers for tapered flange I-Beams		Running Gear with $\phi 40$ m Cylindrical Main Rollers for tapered flange I-Beams only		Beam Suffix	End Clamp	Beam Size	Nominal Flange Width	
	Without Anti-Lift Rollers	With Anti-Lift Rollers	Without Anti-Lift Rollers	With Anti-Lift Rollers				[Inch]	[mm]
Running Gear Designation with Hardened Steel Rollers .../30-...			Running Gear Designation with Hardened Steel Rollers .../10-... with Plastic Bandage .../12-...		AA	A	S3x5.7	2.33	59
					BB	A	S4x7.7	2.66	68
					CC	A	S5x10.0	3.00	76
					DE	A	S6x12.5	3.33	85
					NF	A	S8x18.4	4.00	102
					ED	A	W4x13.0	3.94	100
					FD	A	W6x8.5	3.94	100
					GD	A	W6x12.0	4.00	102
					HD	B	W8x10.0	3.94	100
					ID	B	W8x13.0	4.00	102
					JD	B	W8x15.0	4.02	102
					KD	B	W10x11.5	3.95	100
					LD	B	W10x15.0	4.00	102
					MD	B	W10x17.0	4.01	102

# Cable Trolleys Program 0325

## Steel Trolleys for Flat Cable



### Technical Details

- Max. Load Capacity 125 kg (275 lbs)<sup>1)</sup>
- Max. Travel Speed 120 m/min (390 FPM)<sup>1)</sup>
- Other trolley sizes available upon request

1) depending on roller size and roller material

Cable Trolley Order No.	End Clamp Order No.	Towing Trolley Order No.	d <sub>a</sub> [mm]	l <sub>w</sub> [mm]	b <sub>1</sub> [mm]	b <sub>2</sub> [mm]	s [mm]	l <sub>e</sub> [mm]	l <sub>m</sub> [mm]
032652-220x160/...	032642-320x160	032662-320x160/...	125	220 <sup>2)</sup>	160	128	35	160	160
032652-220x200/...	032642-320x200	032662-320x200/...			200	168			
032652-250x160/...	032642-320x160	032662-320x160/...			160	128	50		
032652-250x200/...	032642-320x200	032662-320x200/...							
032653-290x160/...	032643-320x160	032663-320x160/...	160	290 <sup>2)</sup>	175	128	50		
032653-290x200/...	032643-320x200	032663-320x200/...			215	168			
032653-290x250/...	032643-320x250	032663-320x250/...			265	218			
032653-320x160/...	032643-320x160	032663-320x160/...		320	175	128	70		
032653-320x200/...	032643-320x200	032663-320x200/...						215	168
032653-320x250/...	032643-320x250	032663-320x250/...						265	218
032654-320x160/...	032644-320x160	032664-320x160/...	200	320	175	128	50		
032654-320x200/...	032644-320x200	032664-320x200/...			215	168			
032654-320x250/...	032644-320x250	032664-320x250/...			265	218			

2) Trolley with one bumper only

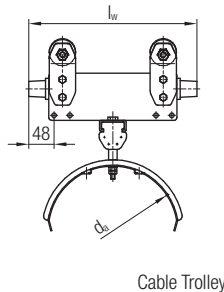
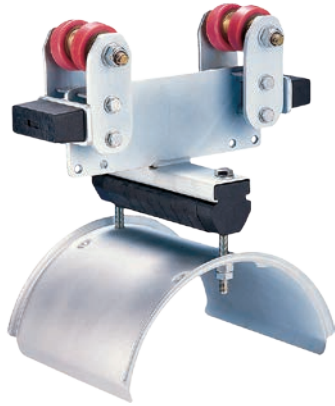
Running Gear with ø50/63 mm Flanged Rollers for tapered flange I-Beams	
Without Anti-Lift Rollers	
Running Gear Designation with Hardened Steel Rollers .../70-...	
With Anti-Lift Rollers	
Running Gear Designation with Hardened Steel Rollers .../71-...	

Running Gear with ø50 mm Cylindrical Main Rollers for tapered flange I-Beams only	
Without Anti-Lift Rollers	
Running Gear Designation with Hardened Steel Rollers .../50-... with Plastic Bandage .../60-...	
With Anti-Lift Rollers	
Running Gear Designation with Hardened Steel Rollers .../51-... with Plastic Bandage .../61-...	

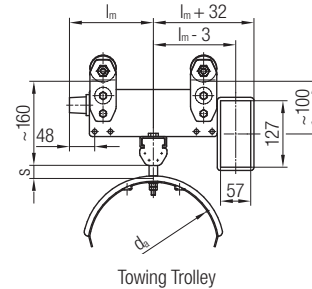
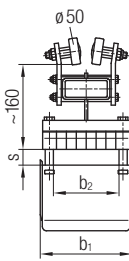
Beam Suffix	Beam Size	Nominal Flange Width	
		[Inch]	[mm]
AA	S3x5.7	2.33	59
BB	S4x7.7	2.66	68
CC	S5x10.0	3.00	76
DE	S6x12.5	3.33	85
NF	S8x18.4	4.00	102
ED	W4x13.0	3.94	100
FD	W6x8.5	3.94	100
GD	W6x12.0	4.00	102
HD	W8x10.0	3.94	100
ID	W8x13.0	4.00	102
JD	W8x15.0	4.02	102
KD	W10x11.5	3.95	100
LD	W10x15.0	4.00	102
MD	W10x17.0	4.01	102

# Cable Trolleys Program 0325

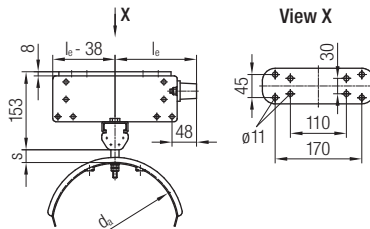
## Steel Trolleys for Round Cable



Cable Trolley



Towing Trolley



End Clamp

### Technical Details

- Max. Load Capacity 125 kg (275 lbs)<sup>1)</sup>
- Max. Travel Speed 120 m/min (390 FPM)<sup>1)</sup>
- Other trolley sizes available upon request

1) depending on roller size and roller material

Cable Trolley Order No.	End Clamp Order No.	Towing Trolley Order No.	d <sub>a</sub> [mm]	l <sub>w</sub> [mm]	b <sub>1</sub> [mm]	b <sub>2</sub> [mm]	s [mm]	l <sub>e</sub> [mm]	l <sub>m</sub> [mm]
032865-320x160/...	032895-320x160	032875-320x160/...	250	320	175	121	25	160	160
032865-320x200/...	032895-320x200	032875-320x200/...			215	161			
032865-320x250/...	032895-320x250	032875-320x250/...			265	211			
032867-400x160/...	032897-400x160	032877-400x160/...	320	400	175	121	32	200	200
032867-400x200/...	032897-400x200	032877-400x200/...			215	161			
032867-400x250/...	032897-400x250	032877-400x250/...			265	211			

Pictures and drawings on this page show various styles of running gear. In practice, any combination of running gear is available. Trolleys from Program 0325 with running gear of Program 0330 (Roller diameter 63 mm) can be supplied, see pages 13 and 14. It is suggested that tow trolley running gear be selected with anti-lift rollers. Running gear to fit other beam styles are also available. Please consult factory.

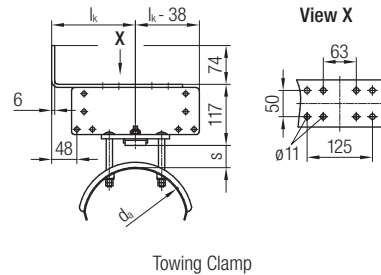
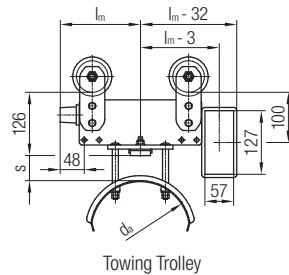
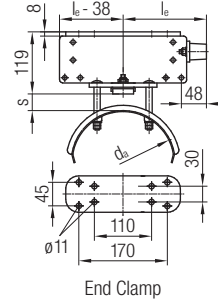
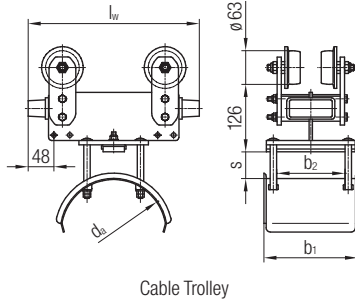
Running Gear with ø 50/63 mm Flanged Rollers for tapered flange I-Beams	
Without Anti-Lift Rollers	
Running Gear Designation with Hardened Steel Rollers .../70-...	
With Anti-Lift Rollers	
Running Gear Designation with Hardened Steel Rollers .../71-...	

Running Gear with ø 50 mm Cylindrical Main Rollers for tapered flange I-Beams only	
Without Anti-Lift Rollers	
Running Gear Designation with Hardened Steel Rollers .../50-... with Plastic Bandage .../60-...	
With Anti-Lift Rollers	
Running Gear Designation with Hardened Steel Rollers .../51-... with Plastic Bandage .../61-...	

Beam Suffix	Beam Size	Nominal Flange Width	
		[Inch]	[mm]
AA	S3x5.7	2.33	59
BB	S4x7.7	2.66	68
CC	S5x10.0	3.00	76
DE	S6x12.5	3.33	85
NF	S8x18.4	4.00	102
ED	W4x13.0	3.94	100
FD	W6x8.5	3.94	100
GD	W6x12.0	4.00	102
HD	W8x10.0	3.94	100
ID	W8x13.0	4.00	102
JD	W8x15.0	4.02	102
KD	W10x11.5	3.95	100
LD	W10x15.0	4.00	102
MD	W10x17.0	4.01	102

# Cable Trolleys Program 0330

## Steel Trolleys for Flat Cable



### Technical Details

- Max. Load Capacity 200 kg (440 lbs)<sup>1)</sup>
- Max. Travel Speed 150 m/min (487.5 FPM)<sup>1)</sup>
- Other trolley sizes available upon request

1) depending on roller size and roller material

Cable Trolley Order No.	End Clamp Order No.	Towing Trolley Order No.	Towing Clamp Catalogue-No.	d <sub>a</sub> [mm]	l <sub>w</sub> [mm]	b <sub>1</sub> [mm]	b <sub>2</sub> [mm]	s [mm]	l <sub>e</sub> [mm]	l <sub>m</sub> [mm]	l <sub>k</sub> [mm]
033252-250x160/...	033242-320x160	033262-320x160/...	033272-320x160	125	250	175	128	50	160	160	160
033252-250x200/...	033242-320x200	033262-320x200/...	033272-320x200			215	168				
033252-250x250/...	033242-320x250	033262-320x250/...	033272-320x250			265	218				
033252-320x160/...	033242-320x160	033262-320x160/...	033272-320x160		320	175	128	85			
033252-320x200/...	033242-320x200	033262-320x200/...	033272-320x200			215	168				
033252-320x250/...	033242-320x250	033262-320x250/...	033272-320x250			265	218				
033253-320x160/...	033243-320x160	033263-320x160/...	033273-320x160	160	320	175	128	70	160	160	160
033253-320x200/...	033243-320x200	033263-320x200/...	033273-320x200			215	168				
033253-320x250/...	033243-320x250	033263-320x250/...	033273-320x250			265	218				
033254-400x160/...	033244-400x160	033264-400x160/...	033274-400x160	200	400	175	128	85	200	200	200
033254-400x200/...	033244-400x200	033264-400x200/...	033274-400x200			215	168				
033254-400x250/...	033244-400x250	033264-400x250/...	033274-400x250			265	218				

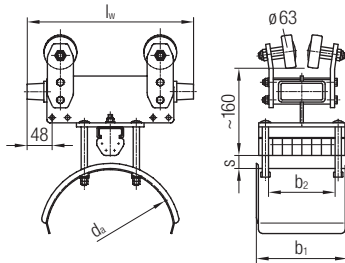
Running Gear with ø 63/80 mm Flanged Rollers for tapered flange I-Beams	
Without Anti-Lift Rollers	
Running Gear Designation with Hardened Steel Rollers .../90-...	
With Anti-Lift Rollers	
Running Gear Designation with Hardened Steel Rollers .../91-...	

Running Gear with ø 63 mm Cylindrical Main Rollers for tapered flange I-Beams only	
Without Anti-Lift Rollers	
Running Gear Designation with Hardened Steel Rollers .../80-... with Plastic Bandage .../82-...	
With Anti-Lift Rollers	
Running Gear Designation with Hardened Steel Rollers .../81-... with Plastic Bandage .../83-...	

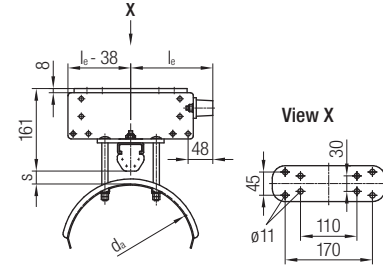
Beam Suffix	Beam Size	Nominal Flange Width	
		[Inch]	[mm]
AA	S3x5.7	2.33	59
BB	S4x7.7	2.66	68
CC	S5x10.0	3.00	76
DE	S6x12.5	3.33	85
NF	S8x18.4	4.00	102
ED	W4x13.0	3.94	100
FD	W6x8.5	3.94	100
GD	W6x12.0	4.00	102
HD	W8x10.0	3.94	100
ID	W8x13.0	4.00	102
JD	W8x15.0	4.02	102
KD	W10x11.5	3.95	100
LD	W10x15.0	4.00	102
MD	W10x17.0	4.01	102

# Cable Trolleys Program 0330

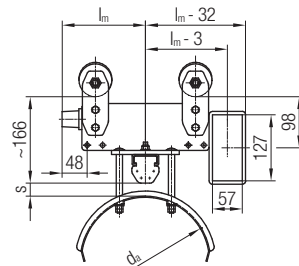
## Steel Trolley for Round Cable



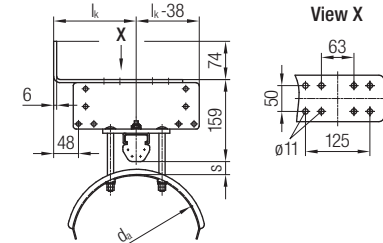
Cable Trolley



End Clamp



Towing Trolley



Towing Clamp

### Technical Details

- Max. Load Capacity 200 kg (440 lbs)<sup>1)</sup>
- Max. Travel Speed 150 m/min (487.5 FPM)<sup>1)</sup>
- Other trolley sizes available upon request

1) depending on roller size and roller material

Cable Trolley Order No.	End Clamp Order No.	Towing Trolley Order No.	Towing Clamp Catalogue-No.	d <sub>a</sub> [mm]	l <sub>w</sub> [mm]	b <sub>1</sub> [mm]	b <sub>2</sub> [mm]	s [mm]	l <sub>e</sub> [mm]	l <sub>m</sub> [mm]	l <sub>k</sub> [mm]
033465-320x160/...	033495-320x160	033475-320x160/...	033485-320x160	250	320	175	121	25	160	160	160
033465-320x200/...	033495-320x200	033475-320x200/...	033485-320x200			215	161				
033465-320x250/...	033495-320x250	033475-320x250/...	033485-320x250			265	211				
033467-400x160/...	033497-400x160	033477-400x160/...	033487-400x160	320	400	175	121	32	200	200	200
033467-400x200/...	033497-400x200	033477-400x200/...	033487-400x200			215	161				
033467-400x250/...	033497-400x250	033477-400x250/...	033487-400x250			265	211				

Pictures and drawings on this page show various styles of running gear. In practice, any combination of running gear is available. It is suggested that tow trolley running gear be selected with anti-lift rollers. Running gear to fit other beam styles are also available. Please consult factory.

Running Gear with $\phi$ 63/80 mm Flanged Rollers for tapered flange I-Beams	
Without Anti-Lift Rollers	
Running Gear Designation with Hardened Steel Rollers .../90-...	
With Anti-Lift Rollers	
Running Gear Designation with Hardened Steel Rollers .../91-...	

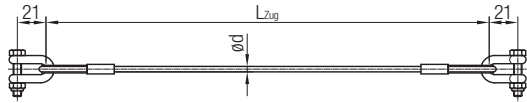
Running Gear with $\phi$ 63 mm Cylindrical Main Rollers for tapered flange I-Beams only	
Without Anti-Lift Rollers	
Running Gear Designation with Hardened Steel Rollers .../80-... with Plastic Bandage .../82-...	
With Anti-Lift Rollers	
Running Gear Designation with Hardened Steel Rollers .../81-... with Plastic Bandage .../83-...	

Beam Suffix	Beam Size	Nominal Flange Width	
		[Inch]	[mm]
AA	S3x5.7	2.33	59
BB	S4x7.7	2.66	68
CC	S5x10.0	3.00	76
DE	S6x12.5	3.33	85
NF	S8x18.4	4.00	102
ED	W4x13.0	3.94	100
FD	W6x8.5	3.94	100
GD	W6x12.0	4.00	102
HD	W8x10.0	3.94	100
ID	W8x13.0	4.00	102
JD	W8x15.0	4.02	102
KD	W10x11.5	3.95	100
LD	W10x15.0	4.00	102
MD	W10x17.0	4.01	102



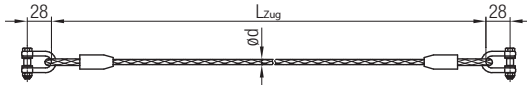
# Accessories for Program 0320, 0325 and 0330

## Towing Ropes

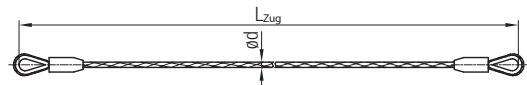


Type A

Different types and lengths available upon request.  
Type C suggested for use with shock cord assembly.



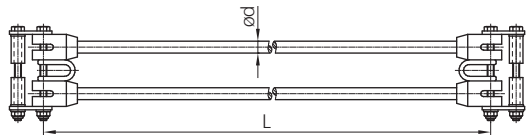
Type B



Type C

Order No.	ø d [mm]	Material Rope	Type	Program
020328-04	4	Galvanized Steel	A	0320
020329-04	4	Galvanized Steel (w/PVC Jacket)		
020328-06	6	Galvanized Steel	B	0325, 0330
020329-08	8	Galvanized Steel (w/PVC Jacket)		
020325-08	8	Galvanized Steel (w/PVC Jacket)	C	

## Damping Devices



Different types and lengths available upon request.

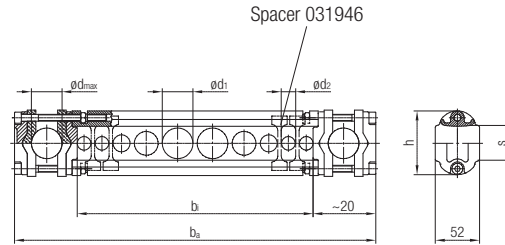
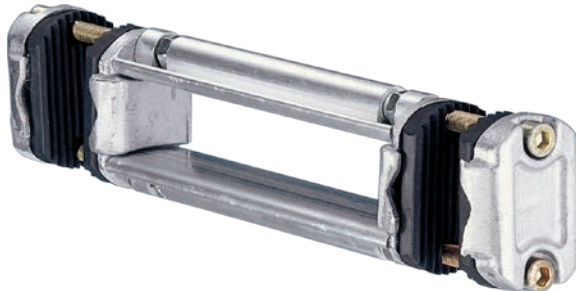
### Note

In case of order please state the lengths  $L_{\text{sum}}$  of the respective shock cords.

Order No.	ø d [mm]	Material Rope	Program
020337-10	10	Rubber core with a Nylon jacket	0325, 0330
020337-14	14		

# Accessories for Program 0320, 0325 and 0330

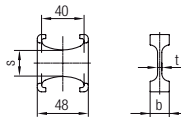
## Round Cable Clamps



Order No.	$\varnothing d_{max}$ [mm]	$b_1$ [mm]	$b_a$ [mm]	$h$ [mm]	$s$ [mm]	$d^{(1)}$ [mm]	Support Rail	Material Cable Clip	Fasteners	Weight [kg]			
031941-026x100/400	26	100	236	64	30	34	Aluminum	Rubber	Stainless Steel	0.95			
031941-026x150/400		150	286							1.07			
031941-026x200/400		200	336							1.09			
031941-026x250/400		250	386							1.31			
031941-036x100/400	36	100	256	74	40	46				Aluminum	Rubber	Stainless Steel	1.04
031941-036x150/400		150	306										1.16
031941-036x200/400		200	356										1.28
031941-036x250/400		250	406										1.40

1) A cable spacer is required between cables if the sum of the diameters of two adjacent cables is smaller than the value  $d$ .

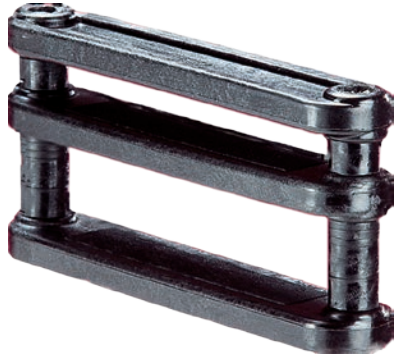
## Spacers



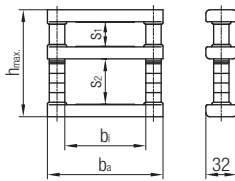
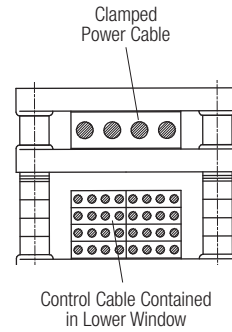
Order No.	$s$ [mm]	$t$ [mm]	$b$ [mm]	Material	Used with Round Cable Clamp
031946-26	25	4	18	Plastic	031941-026x...
031946-36	35	5	19		031941-036x...

# Accessories for Program 0320, 0325 and 0330

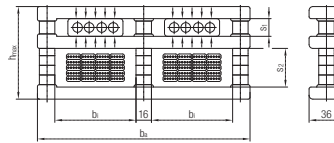
## Flat Cable Clamps



Power cable(s) are clamped in upper window ( $s_1$ ), control cable(s) are contained in lower window ( $s_2$ ) with sufficient space ( $> 2$  mm) to allow the cables to move freely.  
Flat cable clamps are supplied pre-assembled with upper window ( $s_1$ ) of minimum size and lower window ( $s_2$ ) of maximum size. The cable clamps can be adjusted to fit individual cables and/or cable packages by transferring spacers from window ( $s_2$ ) to window ( $s_1$ ).



020126...  
031953...

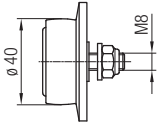


031955...

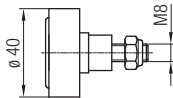
Order No.	$b_1$ [mm]	$b_a$ [mm]	$s_1 + s_2$ [mm]		$s_{1min.}$ [mm]	$h_{max.}$ [mm]	Material		Weight [kg]
							Cable Clamps	Fasteners	
020126-054x018	54	90	18	+2.5	3	50	Galvanized Steel	0.07	
020126-054x028			28			60		0.08	
020126-054x038			38			70		0.09	
031953-084x025/400	84	120	25	+2.5	5	60	Plastic	0.16	
031953-084x035/400			35			70		0.17	
031953-084x045/400			45			80		0.18	
031953-084x055/400			55			90		0.19	
031953-084x065/400			65			100		0.21	
031953-136x025/400	136	172	25	+2.5	5	60	Stainless Steel	0.22	
031953-136x035/400			35			70		0.23	
031953-136x045/400			45			80		0.24	
031953-136x055/400			55			90		0.25	
031953-136x065/400			65			100		0.26	
031953-136x075/400			75			110		0.27	
031953-136x085/400			85			120	0.28		
031955-084x035/400	84	220	35	+2.5	5	70	Plastic	0.41	
031955-084x045/400			45			80		0.43	
031955-084x055/400			55			90		0.44	
031955-084x065/400			65			100		0.46	
031955-084x075/400			75			110		0.48	
031955-103x025/400	103	258	25	+2.5	5	60	Stainless Steel	0.42	
031955-103x035/400			35			70		0.43	
031955-103x045/400			45			80		0.46	
031955-103x055/400			55			90		0.47	
031955-103x065/400			65			100		0.49	
031955-103x075/400			75			110		0.51	

# Wear Parts for Program 0320, 325 and 0330

## Replacement Rollers for Program 0320

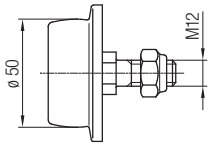


$\varnothing 40/55$ mm Flanged Main Roller	Order No.	Type with
	030101-040	Hardened Steel Roller

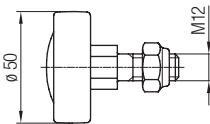


$\varnothing 40$ mm Cylindrical Main Roller	Order No.	Type with	for Flange Widths
	030102-040.1	Hardened Steel Roller	42 - 58 mm
	030102-040.2		61 - 84 mm
	030103-040.1	Plastic-Bandage	42 - 58 mm
	030103-040.2		61 - 84 mm

## Replacement Rollers for Program 0325

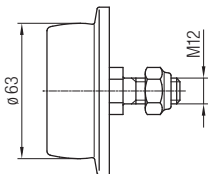


$\varnothing 50/63$ mm Flanged Main Roller	Order No.	Type with
	030101-050	Hardened Steel Roller

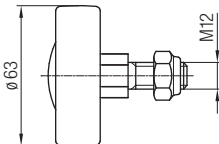


$\varnothing 50$ mm Cylindrical Main Roller	Order No.	Type with	for Flange Widths
	030102-050.1	Hardened Steel Roller	50 - 58 mm
	030102-050.2		61 - 84 mm
	030103-050.1	Plastic-Bandage	50 - 58 mm
	030103-050.2		61 - 84 mm

## Replacement Rollers for Program 0330



$\varnothing 63/80$ mm Flanged Main Roller	Order No.	Type with
	030101-063	Hardened Steel Roller



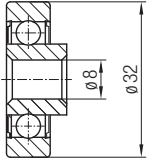
$\varnothing 63$ mm Cylindrical Main Roller	Order No.	Type with	for Flange Widths
	030102-063.1	Hardened Steel Roller	50 - 66 mm
	030102-063.2		67 - 92 mm
	030103-063.1	Plastic-Bandage	50 - 66 mm
	030103-063.2		67 - 92 mm

# Wear Parts for Program 0320, 325 and 0330

---

## Replacement Anti-Lift Roller for Program 0320, 0325 and 0330

---



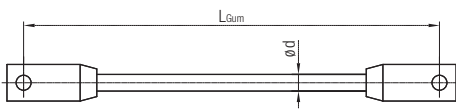
Order No.

02-K012-0062

---

## Shock Cords for Program 0325 and 0330

---



Order No.	$\varnothing d$ [mm]	Weight [kg/m]
020336-10	10	0.09
020336-14	14	0.17

### Note

In case of order please state the lengths  $L_{\text{Gum}}$  of the respective shock cords.



# Your Applications – our Solutions

Festoon Systems from Conductix-Wampfler represent only one of the many solutions made possible by the broad spectrum of Conductix-Wampfler components for the transport of energy, data and fluid media. The solutions we deliver for your applications are based on your specific requirements. In many cases, a combination of several different Conductix-Wampfler systems can prove advantageous. You can count on all of Conductix-Wampfler's Business Units for hands-on engineering support – coupled with the perfect solution to meet your energy management and control needs.



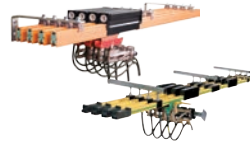
## Cable reels

Motorized reels and spring reels by Conductix-Wampfler hold their own wherever energy, data and media have to cover the most diverse distances within a short amount of time - in all directions, fast and safe.



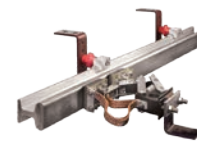
## Festoon systems

It's hard to imagine Conductix-Wampfler cable trolleys not being used in virtually every industrial application. They're reliable and robust and available in an enormous variety of dimensions and designs.



## Conductor rails

Whether they're enclosed conductor rails or expandable single-pole systems, the proven conductor rails by Conductix-Wampfler reliably move people and material.



## Non-insulated conductor rails

Extremely robust, non-insulated conductor rails with copper heads or stainless steel surfaces provide the ideal basis for rough applications, for example in steel mills or shipyards.



## Energy guiding chains

The "Jack of all trades" when it comes to transferring energy, data, air and fluid hoses. With their wide range, these energy guiding chains are the ideal solution for many industrial applications.



## Slip ring assemblies

Whenever things are really "moving in circles", the proven slip ring assemblies by Conductix-Wampfler ensure the flawless transfer of energy and data. Here, everything revolves around flexibility and reliability!



## Inductive Power Transfer IPT®

The no-contact system for transferring energy and data. For all tasks that depend on high speeds and absolute resistance to wear.



## Reels, retractors and balancers

Whether for hoses or cables, as classical reels or high-precision positioning aids for tools, our range of reels and spring balancers take the load off your shoulders.



## Jib boom

Complete with tool transporters, reels, or an entire media supply system – here, safety and flexibility are key to the completion of difficult tasks.



## Conveyor systems

Whether manual, semiautomatic or with Power & Free – flexibility is achieved with full customization concerning layout and location.

# www.conductix.us

## USA / LATIN AMERICA

10102 F Street  
Omaha, NE 68127

Customer Support

Phone +1-800-521-4888

Fax +1-800-780-8329

Phone +1-402-339-9300

Fax +1-402-339-9627

info.us@conductix.com

latinamerica@conductix.com

## CANADA

175 Blvd JF Kennedy  
St. Jerome, QC J7Y 4B5

Customer Support

Phone +1-800-667-2487

Fax +1-800-442-9817

Phone +1-450-565-9900

Fax +1-450-432-6985

info.ca@conductix.com

## MÉXICO

Calle Treviño 983-C  
Zona Centro  
Apodaca, NL México 66600

Customer Support

Phone (+52 81) 1090 9519

(+52 81) 1090 9025

(+52 81) 1090 9013

Fax (+52 81) 1090 9014

info.mx@conductix.com

## BRAZIL

Rua Luiz Pionti, LT 05, QD.  
L - Vila Progresso  
Itu, São Paulo, Brasil  
CEP: 13.313-534

Customer Support

Phone (+55 11) 4813 7330

Fax (+55 11) 4813 7330

info.br@conductix.com

Contact us for our Global Sales Offices



KAT0320-0001-US

